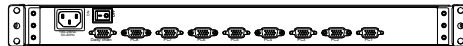




The Anso range of LCD console drawers provide a variety of features that simplify to access servers to making system monitoring, troubleshooting and software upgrades. The self-locking rails when in the fully extended open position and the ultra convenient auto lock release when the LCD panel is closed, make for simple and hassle-free operation. Available with 17.3" Full HD A-Grade LCD panel, combo DB15 8 or 16 port integrated KVM switch.

Features

- Support combo interface, VGA-USB & VGA-PS/2.
- Short depth design suit for mobile rack and limited space.
- Durable 88-key keyboard and touch pad.
- Quick and simple installation.
- Self-locking and auto release rails for ultra convenience.
- Port selection via push buttons or On-Screen-Display (OSD).
- Dedicated daisy chain port to expand up to 240 servers.



Rear of KVM-1708SW-AST-M2



Rear of KVM-1716SW-AST-M2

Part No.	KVM-1708SW-AST-M2	KVM-1716SW-AST-M2
Direct no. of Computers	8	16
Maximum no. of Computers	232(Daisy Chain)	240(Daisy chain)
LCD	Size	17.3"
	Backlight	LED
	Resolution	1920*1080 Full HD (support resolution up to 1920x1200)
	Max.color	262K
	Luminance	300cd/m2
	View Angel (H/V)	140 / 120
	Contrast Ratio	650 : 1
Port Selection	Push Button,OSD or Hotkey	
USB Local console / Expansion Slot	N/A	
KB/Mouse Emulation	USB & PS2	
Rack Depth	450 mm to 650mm (rack cabinet front rails to rear rails)	
Power	100-240V AC 50/60Hz via IEC Type power cord	
Environment	Operation temp: 0 to 50℃ Storage temp: -20 to 60℃ Humidity: 10% - 90%, non-condensing Shock: 10G acceleration (11ms duration) Vibration: 17 to 500Hz 1G PTP	
Physical Dimensions / Net Weights	443x42x457.2mm (WxHxD) /14KG	
Packing Dimensions / Gross weights	605x168x700mm (WxHxD) /17KG	

Accessory

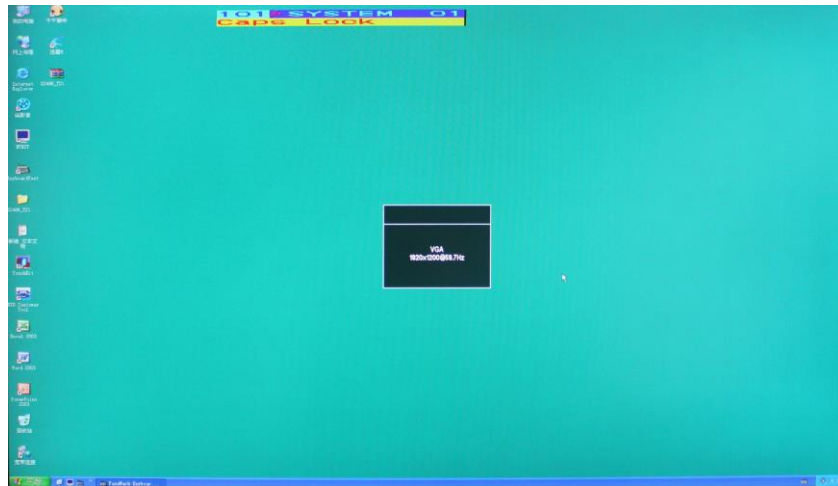
1.8meter IEC Type Power Cord

Option Relate Item

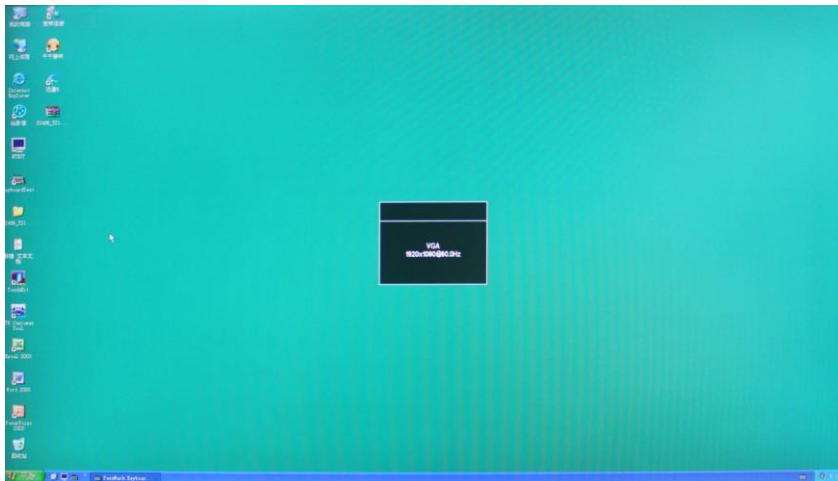
CVU-018	1.8meter 2-in-1 KVM Cable-USB&VGA	CVP-018	1.8meter 3-in-1 KVM Cable-PS/2&VGA
CVU-030	3.0meter 2-in-1 KVM Cable-USB&VGA	CVP-030	3.0meter 3-in-1 KVM Cable-PS/2&VGA
CVU-050	5.0meter 2-in-1 KVM Cable-USB&VGA	CVP-050	5.0meter 3-in-1 KVM Cable-PS/2&VGA

Display present on different resolution

Resolution 1920 x 1200



Resolution 1920 x 1080



Resolution 1600 x 1200

