

# 17.3" Marine Bridge System Display

## Model # MBPM-17W-HB

### High Brightness Version



#### Features

- Front hyper dimming knob control backlight brightness from nearly 0%-100%.
- Support high brightness up to 1000 nits.
- Rugged construction, Front bezel NEMA4 / IP65 compliant.
- Front hardness glass protect screen (AR glass & touch for optional).
- Front osd control buttons to optimized display.
- Build in 2x 2watts stereo speakers.
- Support PIP & POP function.
- Standard with HDMI, VGA, Composite Video, Audio input.
- Panel (Flush) mount with clips.
- Meet standard VESA mount and optional robust mounting bracket.
- IEC60945 certificated

#### TFT Characteristics:

Screen Size	17.3 inch wide TFT LCD
Backlight Type	LED
Resolution	1920x1080 (support up to 1920x1200)
Contrast Ratio	400:1
Brightness ( cd/m2 )	1000
View Angles ( H/V )	140/120
Max. Color	262K
MTBF ( Hrs. )	10,000

#### Power Specifications:

AC Power Input	Standard IEC Type power cord with Internal Power Adapter , 100-240V AC Input
DC Power Input ( option )	Screw Type Terminal Block with internal isolate DC 12V/24V/48V/125V power module

#### Mechanical and Environmental:

IP Protect	Front IP65 Grade
Mounting	Panel ( Flush ) Mount, VESA Mount, Robust Bracket, Sun-visor Bracket
Construction	Aluminum Front Bezel + Metal Housing
Operating Temperature	0 - 50 deg. C
Operating Humidity	5% - 95% ( non -condensing )
Anti-Vibration	5 - 500 Hz / 1 Grms PTP
Anti-Shock	15G / Peak ( 11 ms )
Physical Dimension (WxHxD)	458 x 339 x 66mm
Packing Dimension (WxHxD)	590 x 470 x 220mm
Net Weight / Gross Weight	7.5 / 9.5 KGs
Certification and Approvals	CE / FCC / RoHs / IEC60945

#### Input Signals:

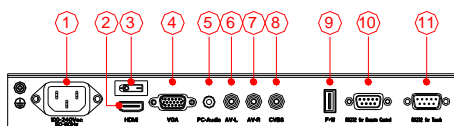
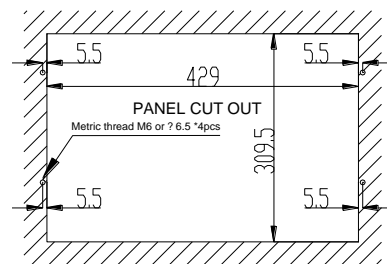
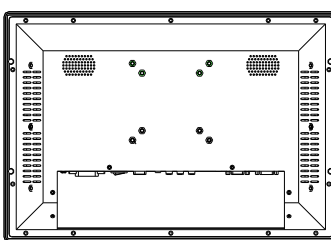
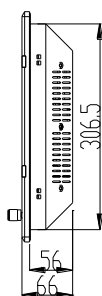
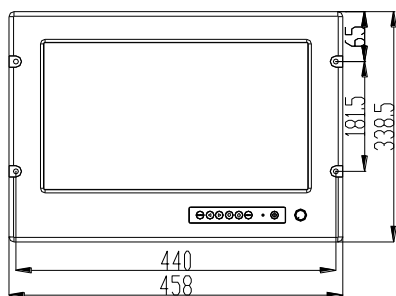
HDMI Signal	HDMI
VGA Signal	D-SUB 15P connector ( Female )
Composite Video	RCA Phono plug
Audio	3.5" jack
AC Power Input	Standard IEC Inlet
DC Power Input ( option )	Screw Terminal Block
Touch Screen ( option )	USB-A or D-SUB 9P connector (Female)
RS-232 Remote (option)	D-SUB 9P connector ( Female )

#### User Controls:

Power On/Off via front buttons
VR Brightness Knob adjustment
Power Mode Status LED indicator
On Screen Display control(OSD)
OSD Remote Control via RS-232 ( option )

#### Available Options:

Touch Screen	Resistive, Capacitive, SAW, IR Touch
AR Hardness Glass	3mm Anti-Reflective Protect Glass
DC Power	Isolate 12V/24V/48V/125V DC Power
SR-BKT	Stand & Roof Mounting Bracket
RT-BKT	Rotary Plate Robust Bracket
SV-BKT	Sun-Visor Bracket



- 1 . AC Inlet
- 2 . HDMI
- 3 . Power sw
- 4 . VGA
- 5 . PC-Audio
- 6 . AV-L
- 7 . AV-R
- 8 . CVBS
- 9 . F/W
- 10 . RS232 for Remote control
- 11 . RS232 for Touch



China (Factory)  
 Add : The south faces industry area of Xia Gang Fu Hai road, Chang'an Town, Dongguan City, Guangdong, China.  
 Tel : +86-769-81666360,81666395-97  
 Fax : +86-769-81666306  
 Email : sales@annso.com.tw

Taiwan (Head Quarter)  
 Anno Technology Co., Ltd.  
 Add : NO.53, Ming YI street, Luzhou Dist.  
 New Taipei City, Taiwan  
 Email : sales@annso.com.tw

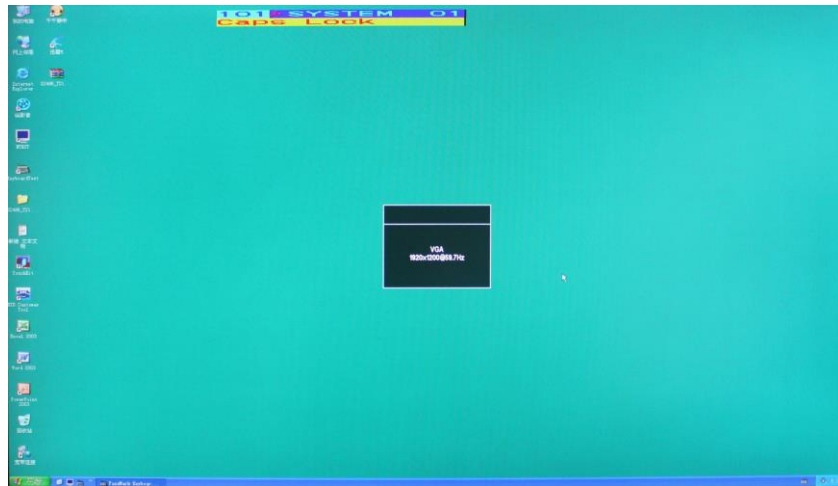
# 17.3" Marine Bridge System Display

## Model # MBPM-17W-HB

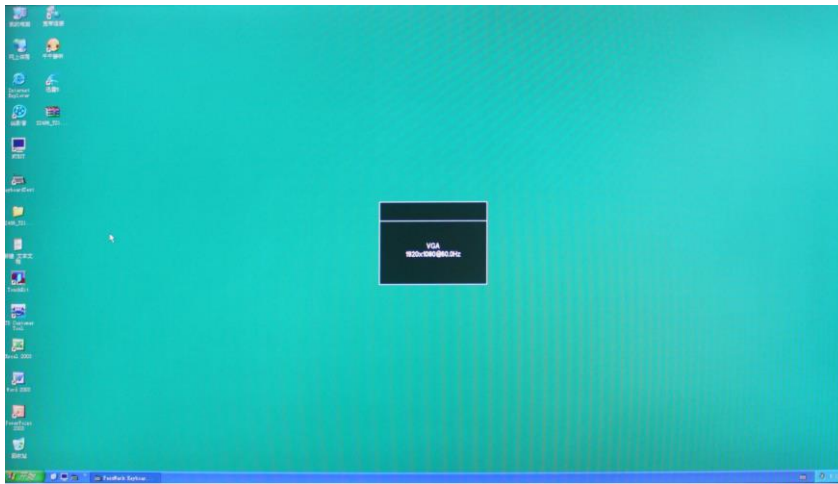
### High Brightness Version

#### Display present on different resolution

Resolution 1920 x 1200



Resolution 1920 x 1080



Resolution 1600 x 1200

